

E ROSEBUD

Bill Set for Hearing

Page 7



NEWS

75 cents

THE CARBON COUNTY

Vol. 96 No. 10 – Thursday, March 10, 2016

Red Lodge, Montana

March 10, 2016— 7

East Rosebud looking rosier

By Eleanor Guerrero
CCN Senior Reporter

Frank Anninghofer, Vice President of Friends of East Rosebud, had some hopeful news on preservation efforts for all who enjoy the beautiful E. Rosebud region.

Senate Bill #1577 is set for hearing March 17, 3 p.m.

“After 10 meetings over 2 busy days it looks like there is a fair chance to get our East Rosebud Wild and Scenic River Act passed by the end of the year,” he said. “We have been presented with a roadmap for the Senate side that includes an initial hearing, a mark-up (Committee vote), and full Senate vote over the next 9 months. Our 2 Senators Steve Daines and Jon Tester are fully behind us and replies from the Senate Committees were very promising.”

He said the situation is more tricky in the House of Representatives but gave Congressman Zinke some credit for his assistance. “The House Committee Chairmen have a different view of public lands and do not cherish them in the

same way as Montanans' do. The good thing is: We were able to talk to a couple of the key players and got the dialogue started. Congressman Ryan Zinke is pushing the Committee from his end. Our hope is that we get another chance of explaining the East Rosebud situation after things get moving in the Senate.”

East Rosebud Creek originates high in the Absaroka-Beartooth Wilderness, flowing from the slopes of Montana's highest peaks through East Rosebud Lake and out onto the prairie where it joins the Yellowstone River. The East Rosebud Valley, formed long ago by advancing glaciers, is thought by many to be one of Montana's most beautiful valleys. Lying within the Greater Yellowstone ecosystem, East Rosebud Creek possesses remarkable scenic, recreational, geologic, fish and wildlife, and historic values. Pat Marcuson, noted fisheries biologist and author of the popular fishing book *Fishing the Beartooths*, said the spectacular East Rosebud Creek is “the land of plenty; plenty of waterfalls, plenty

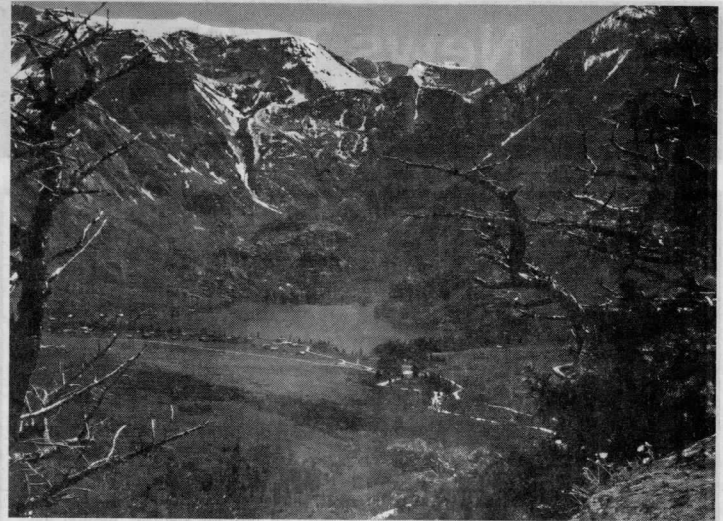


Photo by Frank Anninghofer

This shot of the E. Rosebud was taken from Rosina Tower.

of glaciers, plenty of vertical walls, plenty of fish, plenty of wildlife, plenty of visitors”. One can find eagles nesting, Mountain Goats and Big Horn sheep, Black and Grizzly bears and a rare wolverine, see moose sparing in the fall, hear the elk bugling, spot Mountain Lions, foxes, and wolves and Whitetail and Mule Deer. Anglers can catch Brown, native Cutthroat, Rainbow, and Brook Trout, as well as native Mountain Whitefish.

Anninghofer states the reasons the group has fought so long to preserve this area are that it generates millions of dollars each year for the local economy “Tourism accounts for over \$ 70 Million per year in Carbon County.” He says it

would be budget neutral as a congressional bill. Less than 1 percent of Montana's rivers are eligible like the East Rosebud for Wild and Scenic status. Set within Absaroka Beartooth Wilderness (13 miles) is it surrounded by Wilderness (7 miles).

There were 2 Small scale hydro power projects but they were dropped for to low profitability. There is no recoverable oil or other minerals according to USGS.

Anninghofer says more than 90 percent of local landowners and all subdivision associations in 10 mile radius are backing this bill.

He calls it “truly bi-partisan support by all Montana Delegates” with no known opposition.